

FITTING INSTRUCTIONS P-77M-BLX-PB-60

1. Cut out fitting template below and fold the template as shown.
2. At the height you want your lock using the template mark the spot showing the cylinder hole and the anchor stud hole. At the cylinder hole drill a 32mm (1¹/₄") diameter through the door. At the anchor stud hole using a 3mm drill bit drill a 20mm pilot hole. (Step 1)
3. With the key removed, insert the cylinder through the brass ring and place it in the hole at the outside of the door. (Step 2)
4. From the inside of the door, secure the backplate to the cylinder with the two flat-ended connecting screws supplied, so that it fits flush with the door surface. For doors less than 45mm (1³/₄") thick, you will need to shorten the connecting screws to make sure they fit tight on the backplate. Hacksaw the connecting bar to 20mm from the cylinder backplate. (Step 3)
5. Place the lock body on the inside of the door, making sure that the flat connecting bar of the cylinder is inserted into the slot on the back of the lock body. Mark the outline of the lip of the lock case on the edge of the door and chisel a recess to suit. At the lip using a 3mm drill bit drill two 20mm pilot holes. (Step 4)
6. Remove the lock from the door and screw the anchor stud (ensuring it is facing the right way) to the door, PLEASE ENSURE THE ANCHOR STUD SCREW IS NOT TIGHTENED TOO MUCH, where the pilot hole has already been created in step 1. (Step 5)
7. Place the lock body on the inside of the door, making sure the connecting bar of the cylinder is inserted into the slot on the back of the lock body, then push the lock onto the anchor stud until it engages, (It may be necessary to tap the lip of the lock to engage the lock to the anchor stud into place) screw the lock onto the door with the screws provided. (Step 6&7)
8. Gently close the door and using the fitted lock as a guide, mark the position of the remaining component – the 'staple' on the door frame. Chisel out a recess in the door frame to hold the staple flush with the door frame and fit it with the screws provided. (Steps 8&9)

To fit the 77M lock over an existing YALE no 77 Traditional Nightlatch

1. Place lock on the inside of door, making sure the flat connecting bar of the cylinder is inserted into the slot on the back of the lock body. Mark the outline of the lip of the lockcase on the edge of the door and chisel a recess to suit. At the lip using a 3mm drill bit drill a 20mm pilot hole. (Step 4)
2. Remove the lock from the door and screw the anchor stud to the door at the correct position shown at the hole at the back of the Traditional Nightlatch PLEASE ENSURE THE ANCHOR STUD SCREW IS NOT TIGHTENED TOO MUCH (Ensure the screw is put in straight and not at an angle). (Step 5)
3. Place the lock body on the inside of the door, making sure the connecting bar of the cylinder is inserted into the slot on the back of the lock body, then push the lock onto the anchor stud until it engages, screw the lock onto the door with the screws provided. (Steps 6&7)
4. Gently close the door and using the fitting lock as a guide, mark the position of the remaining component – the 'staple' on the door frame. Chisel out a recess in the door frame to hold the staple flush with the door frame and fit it with the screws provided. (some filling may be required to cover the old recessed wood from the frame). (Steps 8&9)

The fitting of your new lock is now completed and guaranteed for 10 years.

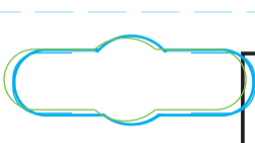
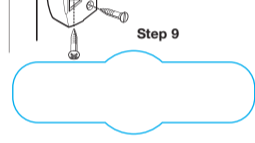
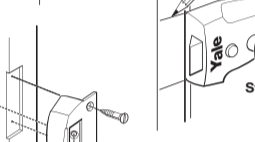
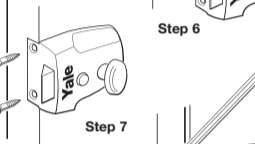
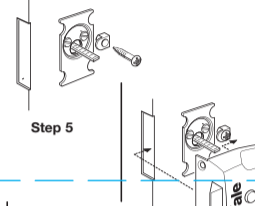
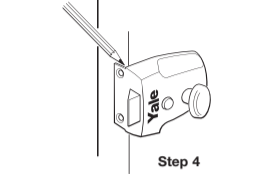
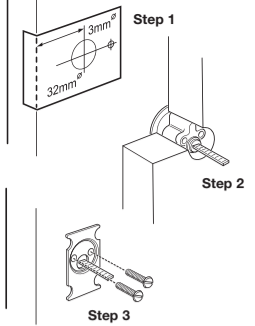
DOOR THICKNESS: This lock is suitable for doors up to 57mm (2¹/₄") thick or 54mm (2¹/₈") where a doorpull is fitted.

CARE OF YOUR CYLINDER RIM LOCK: Never take your cylinder apart. Never oil or paint the cylinder. To lubricate, use WD40 or similar.

LOCK: Moving parts may be greased.

CAUTION: This lock is not designed for use with outward opening doors. Do not attempt to modify it.

FOR MAXIMUM SECURITY:
The gap between the lock body and the 'staple' should be kept to a minimum and must never exceed 5mm (1/8").



FITTING TEMPLATE:

Cut out and fold along dotted 'FOLD' line.

Lock can be fitted to either left or right hand opening doors

ANCHOR STUD HOLE

CYLINDER HOLE use this hole when (viewed from inside) lock is fitted to right hand side of door



Align centre line with required height marked on door



CYLINDER HOLE use this hole when (viewed from inside) lock is fitted to left hand side of door



ANCHOR STUD HOLE

FOLD

PLEASE NOTE:

It is essential that all holes are marked and drilled accurately.