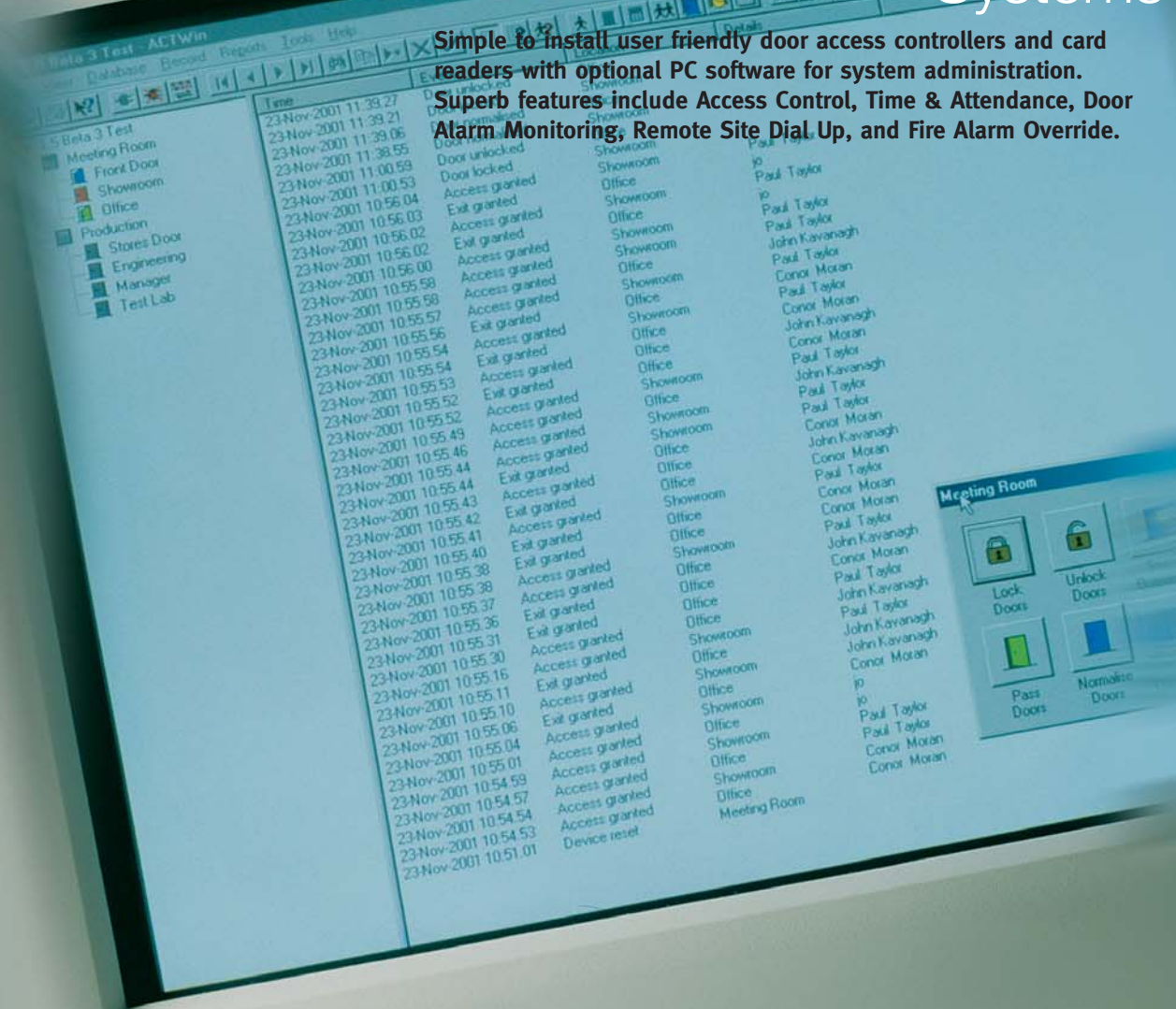


ACT

Card Access Systems

Simple to install user friendly door access controllers and card readers with optional PC software for system administration. Superb features include Access Control, Time & Attendance, Door Alarm Monitoring, Remote Site Dial Up, and Fire Alarm Override.



When performance counts **ACT Card Access Systems**

Card Access Systems

Product Overview

The ACT1000 single door controller offers the ideal upgrade path from the ACT standalone product range. For systems above one door choose the ACT2000 or ACT3000 door controllers. To extend the controllers from two up to sixteen doors install the DS100 single door expander. For larger systems up to one thousand doors simply network the ACT 2000 or ACT3000 controllers to a PC. ACT door controllers are compatible with the full range of ACT card readers and most third party readers. Choose from the ACTWinPro and Pro Lite PC applications to exploit the full potential of hardware controllers.

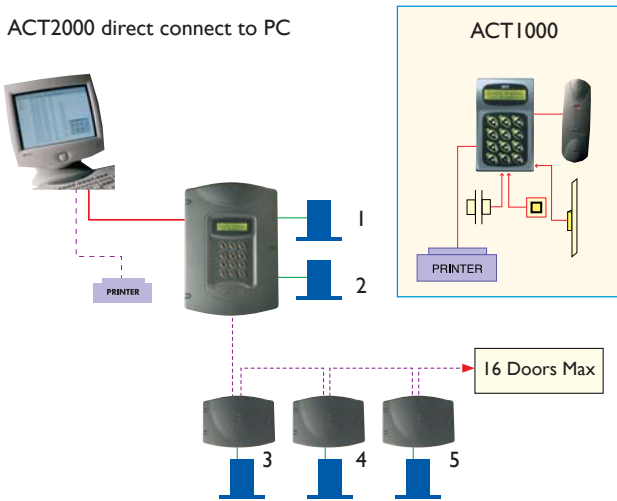
Applications

Access Control: Prevent unauthorised access to areas by staff visitors or strangers. Provide secure and speedy access to secured areas for authorised personnel. Record all card and door transactions by time and date in the powerful ACTWinPro database. Add and delete cardholders in seconds. Control and administrate remote sites via ACTWinPro software.

Time & Attendance: Install entry and exit readers on perimeter doors and record staff time and attendance. Export information to industry standard pay roll software packages.

Door Alarm Monitoring, Building Evacuation and Door Control: Monitor the status of all doors and alert staff or security personnel of any unauthorised access. In the event of fire automatically release all doors and provide a roll call of all staff and visitors. Provide fast and effective door control from a single point.

ACT2000 direct connect to PC



Note: For systems above 16 doors, install ACT PC Interface. 1000 Doors Max

PC Specification: ACTWin software requires Windows 9X or Windows NT - XP

Features

Feature	ACT1000	ACT2000	ACT3000	ACTWin Pro	ACTWin Pro Lite
Doors	1	2 to 16 *	2 to 16 *	64	1000
Cardholders	10,000	20,000	30,000	30,000	30,000
Log Events	500	5,000	5,000	Infinite	Infinite
User Groups	16	32	1000	Infinite	Infinite
Time zones	1	32	256	Infinite	Infinite
Timed Actions	Y	Y	Y	Y	Y
Printer Facility	Y	Y	Y	Y	Y
Interlock	Y	Y	Y	NA	NA
Roll Call	NA	NA	NA	Y	Y
Multi client	NA	NA	NA	Y	N
Full admin audit trail				Y (5)	N
Anti-Pass back	N	Y	Y	NA	NA
Timed anti-passback	N	N	Y	NA	NA
Holiday Scheduler	Y	Y	Y	Y	Y
Entry Exit Facility	Y	Y	Y	NA	NA
Fire Alarm Override	Y	Y	Y	NA	NA
Pin & Card	Y	Y	Y	NA	NA
Flash upgradeable	N	N	Y	NA	NA
Built in TCP/IP	N	N	Y	NA	NA

*The DS100 is a single door expander for the ACT2000/3000 controllers (max 14 per controller).

Controller Electrical & Mechanical Specification

	ACT1000	ACT2000/3000	DS100
Operating Voltage (DC)	10 - 14.5 volts	10 - 14.5 volts	10 - 14.5 volts
Current Consumption	40 - 150 mA	120 to 230 mA 200 to 420 mA	40 to 120 mA
Weight	0.75 kilos	.7 kilos	0.414 kilos
Operating Temperature	-10° to 50°C	-10° to 50°C	-10° to 50°C
Dimensions (WxHxD in mm) *	87x138x37	270x190x60	110x190x60

* These units must be installed indoors or in a weather sealed and heated outdoor housing

Card Reader Electrical & Mechanical Specification

	ACT1010	ACTPro1030	ACTPro*
Operating Voltage (DC)	5 - 12 volts	5 - 12 volts	5 - 12 volts
Current Consumption	20 mA	40 mA	40 mA
Weight	0.5 kilos	0.2 kilos	0.2 kilos
Dimensions (WxHxD in mm)			
Surface	44x138x37	36x108x13	100x110x35
Flush			100x110x20
Indoor/Outdoor	Y	Y	Y

*ACTPro including 1040/50/60

Cabling Specification

From	To	Max Cable Run	Cable
ACT1000/2000/3000	PC (Direct connect)	30m	Twisted Screen Pair
ACT1000/2000/DS100	Card Readers	30m at 5 volts 100m at 12 volts	8 Core Screened
ACT2000/3000	DS100 (last)	1.4km	Twisted Screen Pair
ACT1000/2000	PC Interface	1.4km	Twisted Screen Pair
PC Interface	PC	10m	Twisted Screen Pair
ACT1000/2000/DS100	Lock, Push Button etc		Standard Alarm Cable

- When networking Controllers to the interface or the DS100 to the ACT2000 the maximum distance to the last unit is 1.4km. The units must be daisy chained and **not** star wired.
- Category 5 or Belden cable maybe used

