

# Locks Online Fact Fix

A FREE Printable PDF exclusive from Locks Online! Making sure you have all the information about the product. A fantastic product to help everyday living. For commercial and domestic use, the LOL Easi Auto Opener allows any everyday door to become fully automatic with the use of a push to release action.

## LOL Easi Auto Opener

A system for everyday use, the Easi Auto Opener allows any door from domestic use to commercial doorways to become fully automatic. Sitting at the top of the door, it can be used for single and double doorways, allowing full use of its functions. With a basic kit, you are able to enter a door from pushing one button or typing in a key code. The Easi Auto Opener has a built in sensor allowing you to freely get in and out of the door way, without being caught by the closing door. Once you are through the doorway, the Easi Auto Opener will action itself to close the door, creating ease of use and practicality for everybody.



### Who can use the Easi Auto Opener?

The Easi Auto Opener can be used by anyone and everyone. From domestic use where wheelchair access is needed, to commercial use in busy businesses where people need to carry heavy goods through doorways, you can ensure this unique modern product will suit all needs. It can suit areas such as:

- Access doors in domestic homes
- Access doors in residential housing
- Elderly homes where doors may be too heavy to open
- Small businesses such as boutique shops
- Large commercial buildings such as offices
- Commercial door ways in public places for authorized access
- And much more.

# Locks Online Fact Fix

## Features of the Easi Auto Opener

Fully automatic, always open, door free.  
 Use on single or double doors  
 For both inward and outward opening doors  
 Slow open and close when approaching the limits  
 Fire mode  
 Will stop if door closes slowly onto obstruction  
 Easy to program  
 Easy to install and set up  
 Speed setting for open, close and pause time



Industrial



Multi-tenant  
occupancy



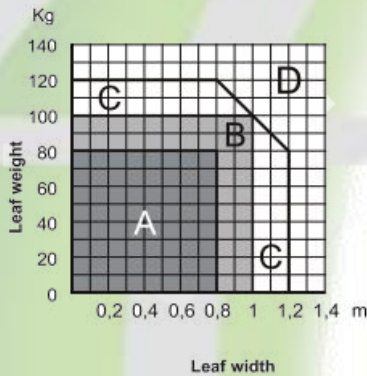
Commercial



Public  
Buildings



Residential

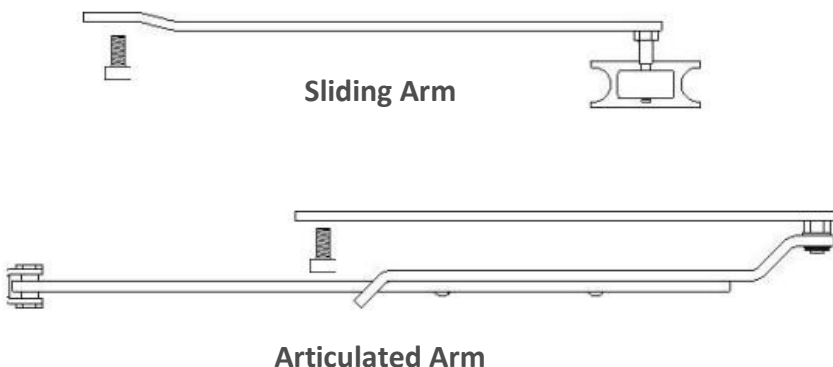


### Use of Conditions:

Zone A: Very Intense use: 600 cycles per day  
 Zone B: Intense Use : 200—300 cycles per day  
 Zone C: Use at reduced speed  
 Zone D: Not allowed

**Maximum door opening angle: 110°**

Overall dimensions	511 x 90 x 110mm
Power supply	230Vac - 50Hz
Motor power	33W
Motor voltage	24Vdc
Battery	12Vdc, 1.3AH
Weight	5Kg
IP rating	IP22
Operating temperature	-10 to +55°C
Mains fail operation	4 hours



### What are the Options?

There are 2 main arm options to chose from. Universal arm Is supplied:

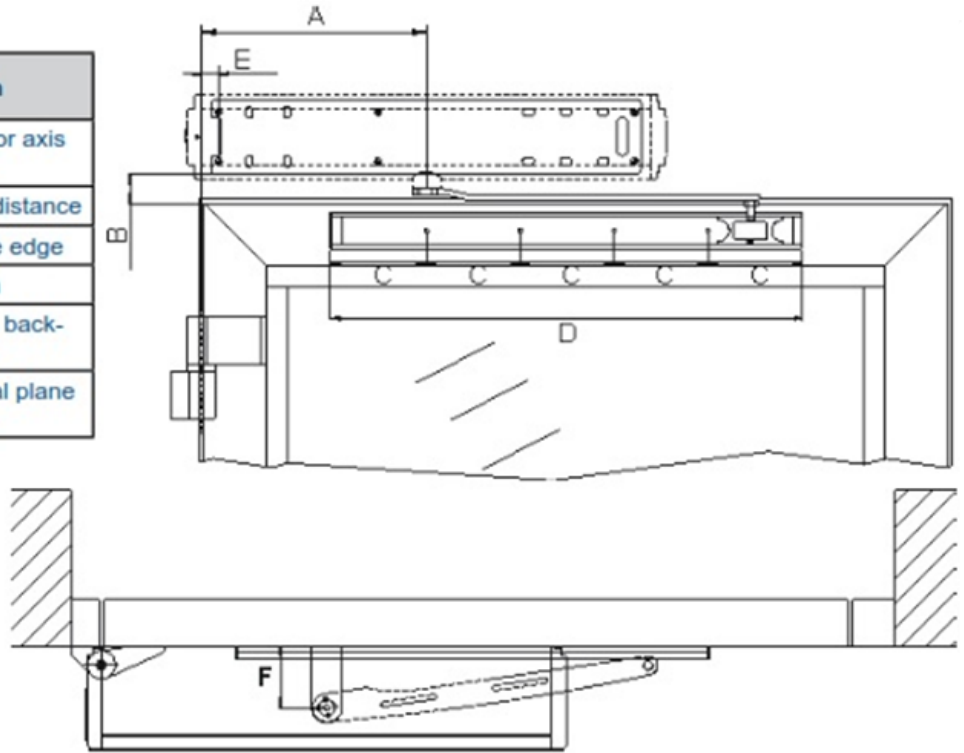
- Sliding Arm
- Articulated arm

# Locks Online Fact Fix

## Sliding Arm

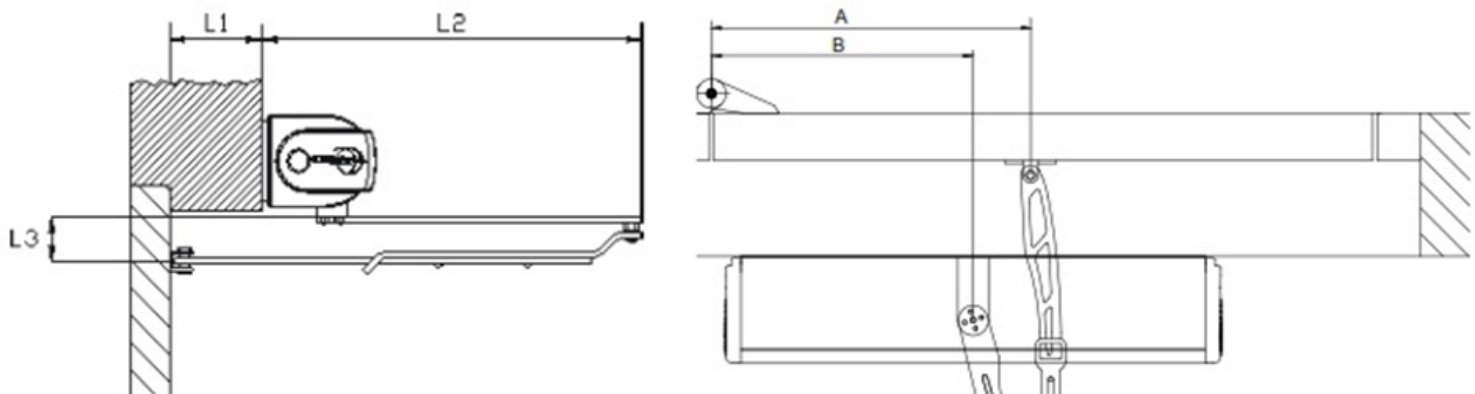
As you can see from the set up below, a sliding arm unit will fit a door where the unit would sit flush. A sliding arm unit should be used for doors that open inwards.

Parameter	Value (mm)	Description
A	240	Door hinge – motor axis distance
B	35	Backplate – guide distance
C	100	Motor axis - guide edge
D	500	Guide width
E	18,5	Distance hinges - backplate hole
F	70,5	Motor axis - vertical plane distance



## Articulated Arm

As you can see below, this arm is good for when you have a thicker wall application of 55mm up to 195mm. The articulated arm is also best for outward opening doors due to the strength of the manufacturing of the system.



Parameter	Speed	Power	Description
	(mm)	(mm)	
A	410	430	Door hinge – door bracket distance
B	270	360	Door hinge – motor axis distance
A - B	140	70	Motor axis – door bracket distance
L1	55 - 195		Door jamb width
L2	371		Distance wall - articulation
L3	43		Distance motor shaft-door bracket