

User Instructions

For
Predator-WiFi (PRO 2)



Manual Version 1

For warranty, service and support, contact:

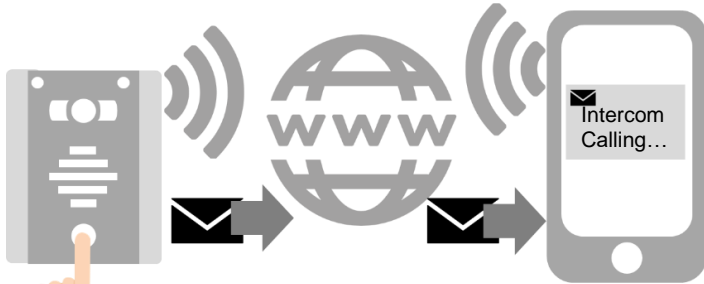
Installed By:	
Install Company Name:	
Installer Phone Number:	
Installer Email Address:	
Date of Install:	

Note: For legal and safety reasons, the manufacturer cannot offer telephone technical support to un-certified or non-qualified persons. Technical support can only be delivered via a qualified gate/door automation installer.

Index

Section	Pages
How the intercom works	3
Answering a call on Android	3
Answering a call on iphone	4
Other settings	5
Sound, volume and Speech	6
Using the APP	7
Adding Additional Users	8
Keypad Overview	9
Troubleshooting	10

How this Intercom Works



The intercom will send a notification message via Google™ PUSH notification service through the internet to the phone. The notification will need to be accepted, the phone unlocked, and then the APP will launch to reveal the visitor and give the user an opportunity to either accept or reject the call..

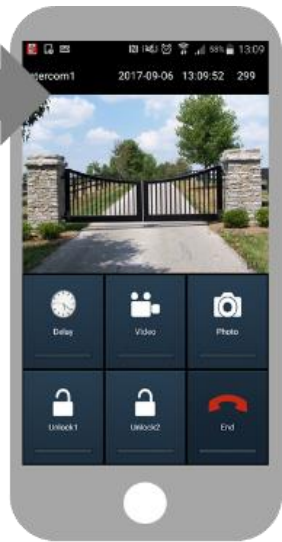
Answering on Android



Swipe down your notification banner when called, and press the Intercom notification.

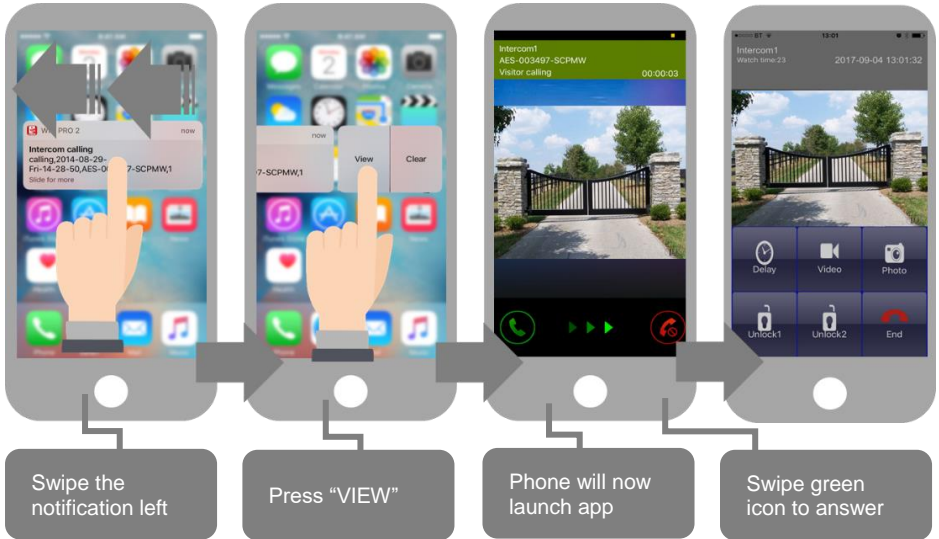


Your phone will now launch the app and you will see a snapshot of the visitor at which point you can answer or decline the call.

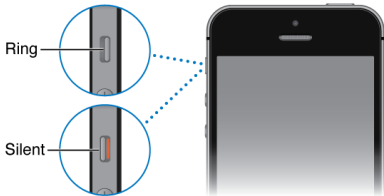


Press the green icon to accept.

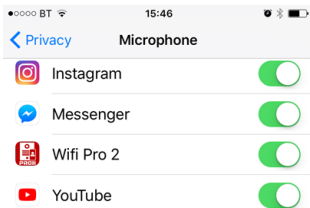
Answering on Apple



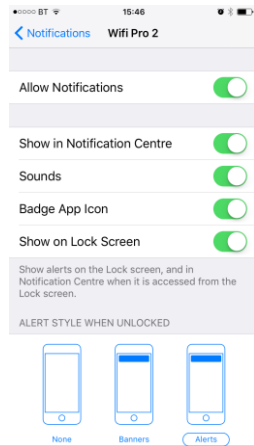
Note: Various versions of IOS and Android OS will have different notification acceptance techniques. Please refer to online support for your device if needed.



TIP: Make sure ringer switch is ON and volume is turned up.

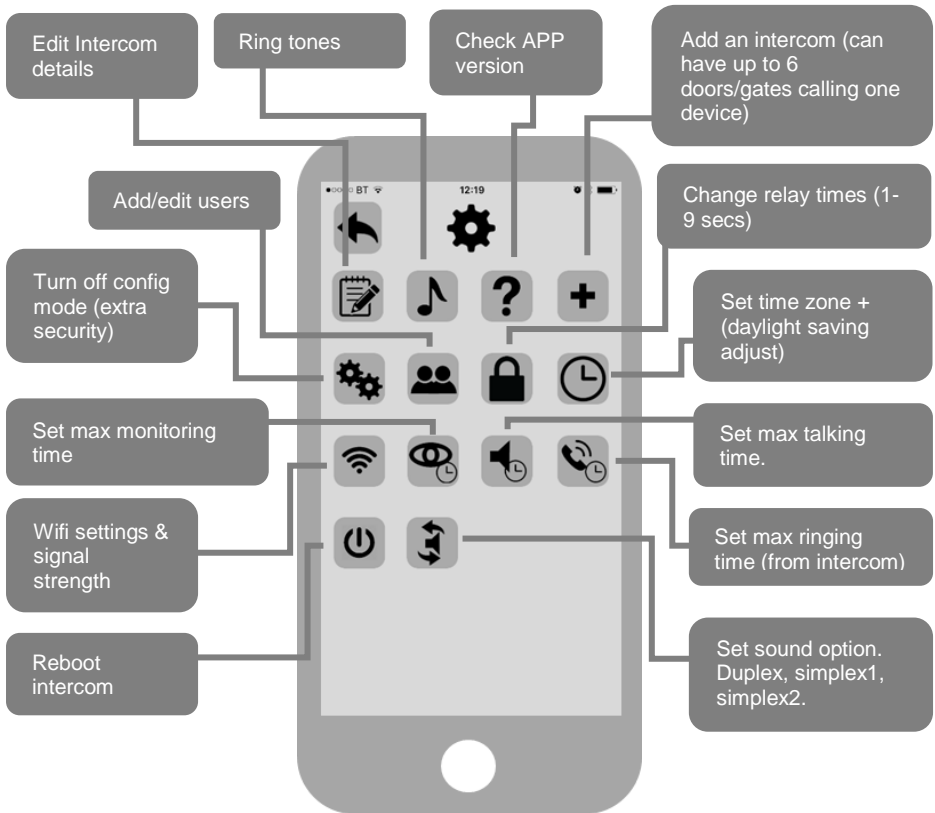


TIP: If there is no voice from the speaker at the gate, check the iPhone microphone permissions in Settings/privacy/microphone



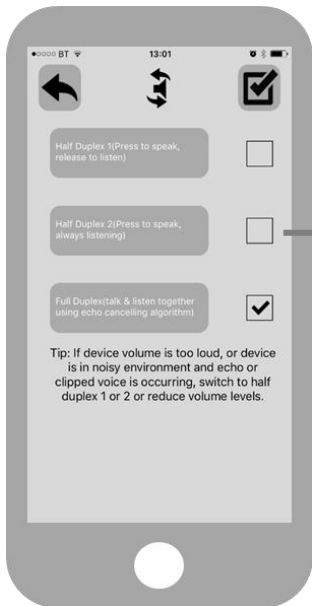
TIP: If you don't get notifications then check settings/notifications and select the app.

Other Settings



Sound, Volumes and Speech

This intercom is capable of full duplex speech, which means two people can have a conversation and appear to speak at the same time. Since various manufacturers of android phones, iphones and tablets all differ in acoustic performance, and different users may require varying levels of volume on their own handset, it may be possible to setup some devices in full duplex mode but others may need to be set in half duplex mode (phone user will press to talk). This may also be required if a phone is in a particularly noisy environment, or the intercom is located near a busy main road with high levels of traffic noise.



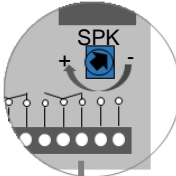
Choose the speech option which best suits the individual and the device being used.

Half Duplex 1(Press to speak, release to listen)

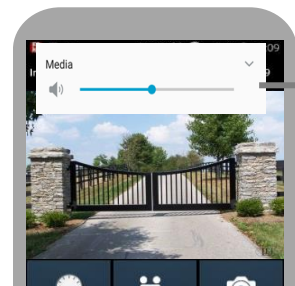
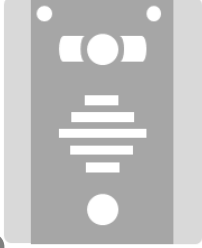
Half Duplex 2(Press to speak, always listening)

Full Duplex(talk & listen together using echo cancelling algorithm)

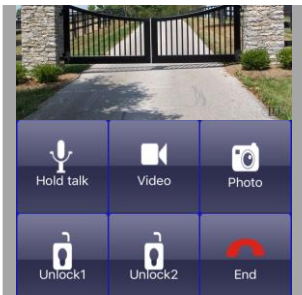
Tip: If device volume is too loud, or device is in noisy environment and echo or clipped voice is occurring, switch to half duplex 1 or 2 or reduce volume levels.



Suggest 80% MAX volume (consult installer)



Suggest 50% MAX volume on Android

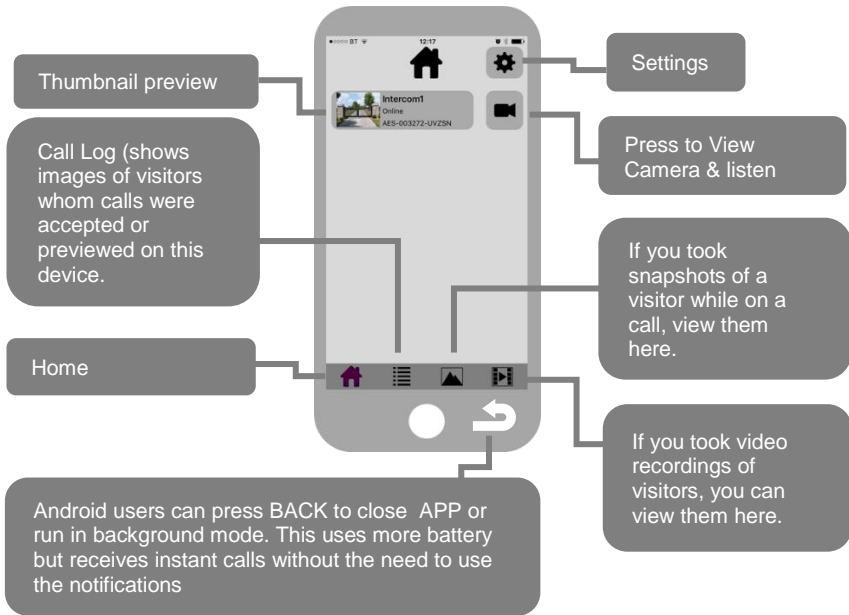


Hold talk Video Photo

Unlock1 Unlock2 End

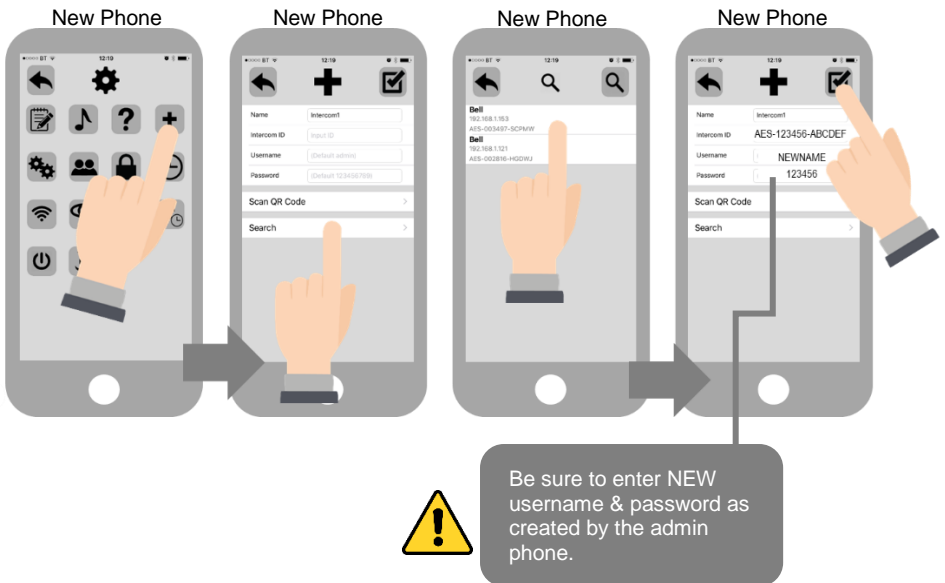
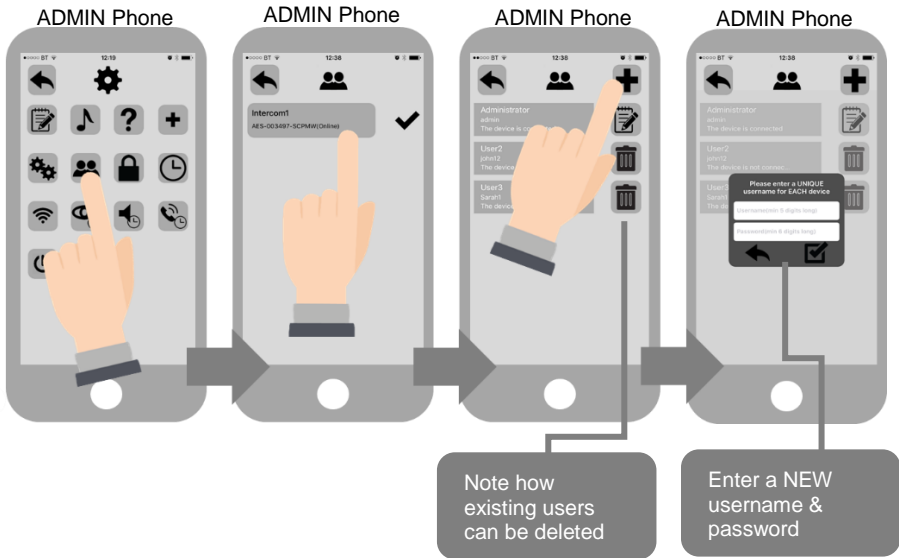
“Press and Hold” option appears when device set to half duplex 1 or 2.

Using the APP



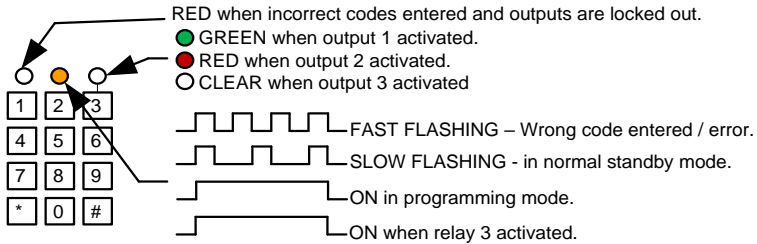
Adding Additional APP Users

Additional users MUST be added with individual user names. Do NOT use the same username.



Keypad overview

This keypad has 3 outputs, all independent from the intercom/app relays. The diagram below shows the LED indicators which indicate programming and relay status information.



To activate your gates or door via keypad, simply enter the 4 digit code which has been programmed by your installer.

Note: If the gates are latched by keypad, they must be unlatched by keypad again. You cannot unlatch the keypad via APP as both are separate, and designed to work independently from one another as a fail safe.

Troubleshooting

Q: My intercom shows OFFLINE status in the APP.

A: Power off the router, wait 10 seconds, power it on again, and check the app in 10 minutes. If that does not work, power the intercom off for 10 seconds and on again. If in doubt, contact your installer and ask them to do this for you.

Q: I have online status when I open the APP, but don't get PUSH notifications to a phone, but another phone has been tested and works ok.

A: Check with your installer and check in settings/PUSH notifications on the iphone that all notification settings are ON for the APP.

Q: I have online status when I open the APP, but when I try to view live video or receive a call, the video screen shows "Fetching".

A: Before contacting your installer, turn off the router, and all wifi devices, and disconnect anything LAN connected to the router. Power the router and intercom off, wait 10 seconds, then power only the intercom and router. Wait 10 minutes and try again. If the video feed is working again with all other connected devices turned off, you may need to upgrade your router to a better spec. This is a classic sign of a router being unable to cope with the traffic demands on it. Before you replace your router, contact your installer so that they might eliminate any other causes first.

Q: It was working fine, but after we added an additional phone or tablet, it seems to be intermittently working on certain devices, or showing a status "ID already in use".

A: Please refer to the section in this manual regarding adding an additional user. Additional devices need to use a different username than the original device. The admin device must first create new users as outlined in this manual, then additional devices use those details to connect. If this was done incorrectly, create a new user with the ADMIN device, and then EDIT the login details to match in the NEW device.

Q: I seem to get smooth video when my phone is on the local network, but when I am on 3G or 4G, notifications are delayed, and video is delayed, or speech is delayed, or laggy.

A: Before you contact your installer, perform any standard speed test on your broadband connection. If your **UPLOAD** speed is less than 1 Meg, then this will be the cause of the problem and need rectifying to allow remote use. Contact your service provider about you UPLOAD speed or have an IT professional investigate your router and equipment.

Q: I can hear the visitor speaking, but they cannot hear me when I speak into my iphone.

A: This is usually due to permissions not having been accepted during installation of the APP. Go to Settings/privacy/microphone, and activate permissions for the app to be allowed to use the microphone on the phone.

Q: The visitor can hear me when I speak, but I cannot hear them.

A: This is usually due to the media volume having been turned down on the phone. Check media volume is at least 50%. Note: Media volume is not the same thing as the phone call volume. So even if you have ringing volume turned up, media volume could still be muted. On iphone, there is a mute switch at the side of the phone as outlined in this manual. Please toggle it off mute mode if it has been muted.

For Service, Warranty and Support Contact:

Installed By:	
Install Company Name:	
Installer Phone Number:	
Installer Email Address:	
Date of Install:	

Note: For legal and safety reasons, the manufacturer cannot offer telephone technical support to un-certified or non-qualified persons. Technical support can only be delivered via a qualified gate/door automation installer.