

CLARKE INSTRUMENTS LTD

At the heart of innovative security solutions for the control of access since 1969

Electric Releases

Type 925A Rim Latch

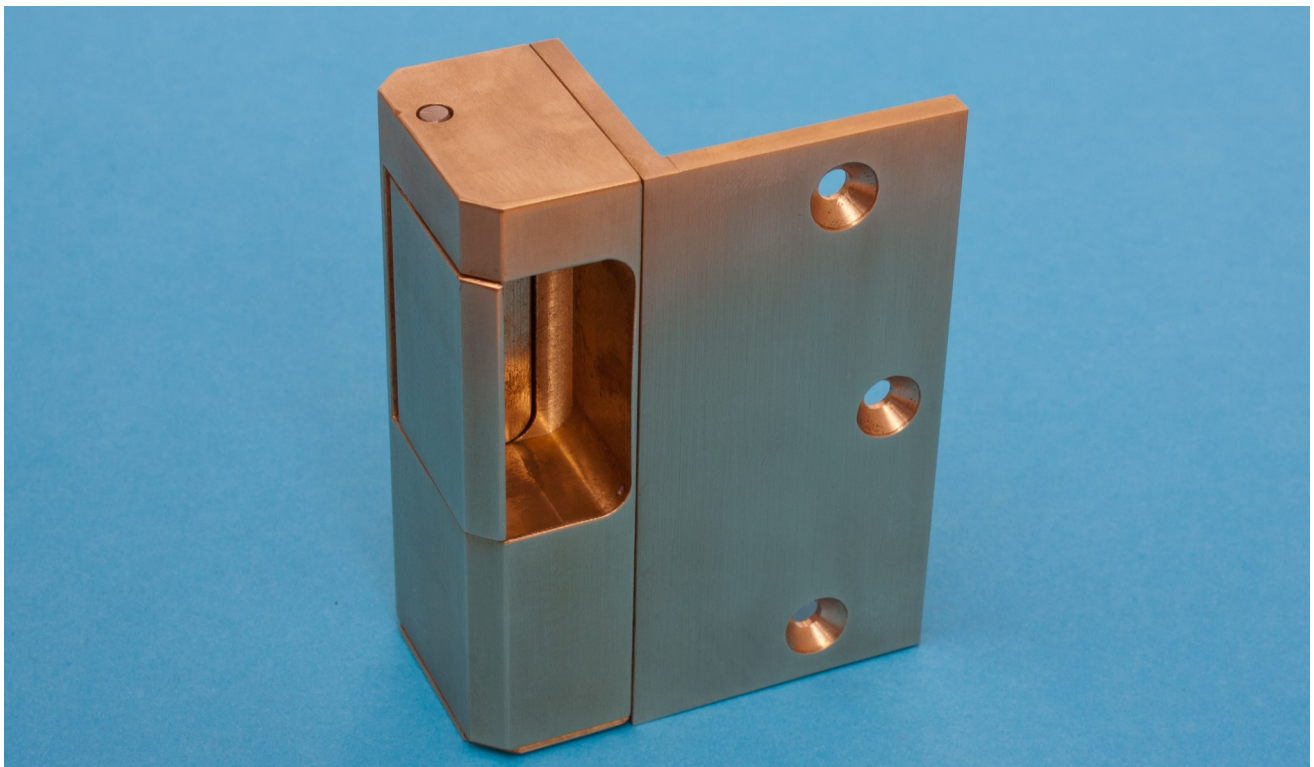
Suitable for the control of access on inward opening external doors

Specification

- ◆ 12VDC 100% fail locked
- ◆ Current consumption 0.3A
- ◆ Precision machined from solid brass
- ◆ Locking plunger - 6mm diameter stainless steel
- ◆ Withstands up to 9KN
- ◆ Suits wood frames

Optional Extras

- ◆ 24VDC
- ◆ Fail open on power failure
- ◆ Compatible with Rim locks including Yale PBS1-2



Designed and manufactured in the UK by Clarke Instruments Ltd

LC7 ? GCB @ B9 '7 C '1 ?

H Y C ` X 7 i g l c a g ' H o u s e
The 8 c W _ g , A] z f X < U j Y b , S 5 + ' " 5 5



Web: www. ` c W _ g c b `] b Y ' W t ` i _

Email: Y b e i [f] Y g 4 ` c W _ g c b `] b Y ' W t ` i _

C.I.L. Products comply with
EMC Directives of EEC
Certificate Number FM 12702
BS EN ISO9001:2008

