

# CLARKE INSTRUMENTS LTD

At the heart of innovative security solutions for the control of access since 1969

## Electric Releases

### Type 957

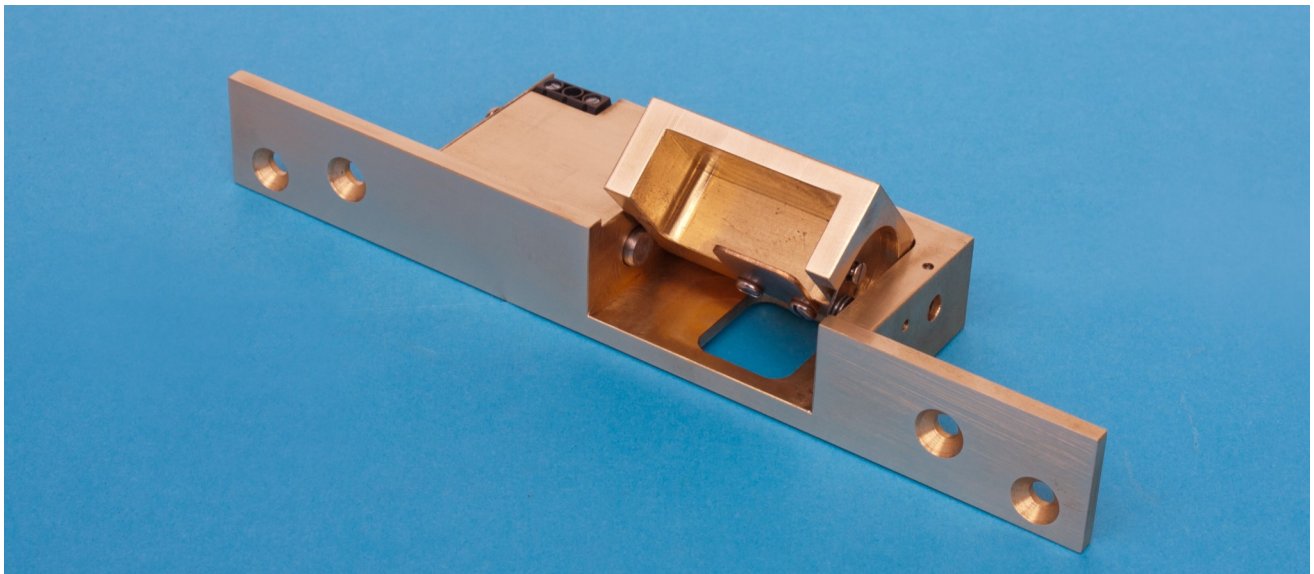
Architecturally attractive with all-in-one natural brass faceplate and body. Offers a higher level of physical security using Chubb 3G110 deadlock or similar.

#### Specification

- ◆ 12VDC 100% fail locked
- ◆ Current consumption 0.308A
- ◆ Precision machined from solid brass
- ◆ 4mm thick integral brass faceplate
- ◆ Locking plunger - 8mm diameter stainless steel
- ◆ Withstands up to 6.7KN
- ◆ Suits wood frames
- ◆ Suits deadbolt dimensions Height 38mm, Width 11-15mm, Throw 13-18mm (depending on door gap)

#### Optional Extras

- ◆ 24VDC
- ◆ Fail open on power failure



Designed and manufactured in the UK by Clarke Instruments Ltd

LC7 ? GCB @B9 '7 C'1 ?

H YC`X7i glca g'House  
The 8 cW\_g, A]ZfX<Uj Yb, S5+' " 55



Web: www.`cW\_gcb`]bY'Wt`f`\_

Email: Ybei [f]Yg4 `cW\_gcb`]bY'Wt`f`\_

C.I.L. Products comply with  
EMC Directives of EEC  
Certificate Number FM 12702  
BS EN ISO9001:2008

