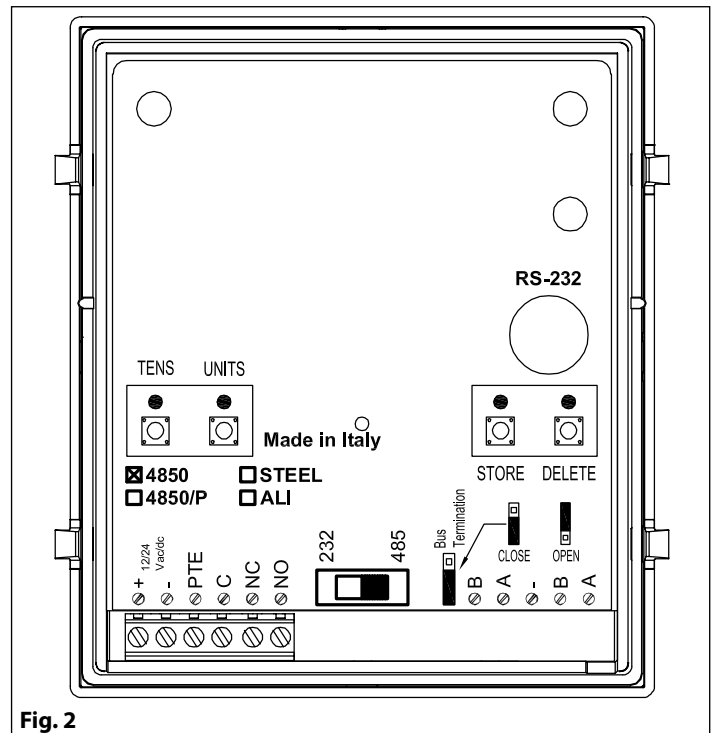
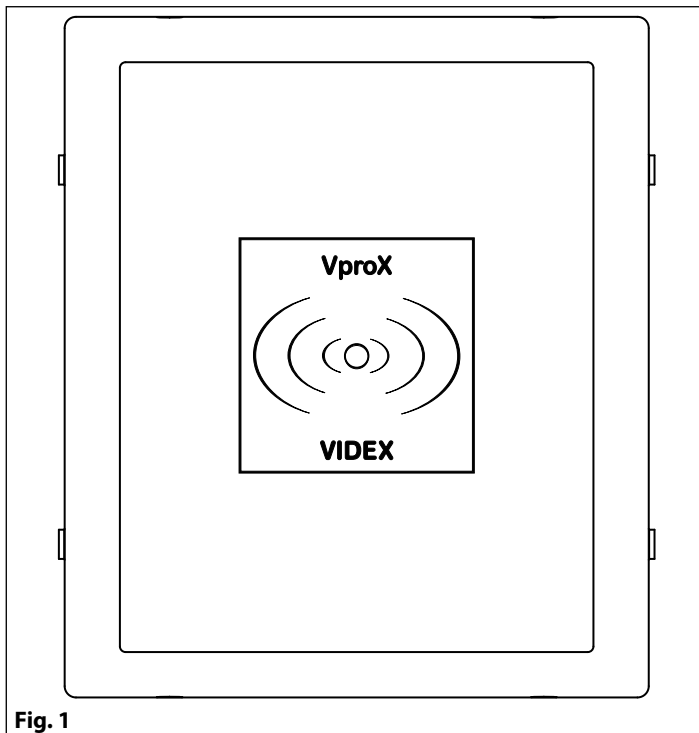


Art. 4850 Stand-alone proximity reader



DESCRIPTION

The unit is housed in a 4000 Series module, has a built in door open relay and can control up to 99 proximity keys. With the addition of a 12Vac/dc power supply a surface or flush mounting support and electric door release the unit provides a complete access control system.

OPERATION

The user offers the key(fob or card format) close to the reader

If the key has been programmed, the unit will emit a beep, the LED will change from yellow to green for about one second and the built in relay will energise.

If the key has not been programmed, the unit will emit a beep, the LED will change from yellow to red for about one second and the key will be ignored. After 5 attempts to use a non programmed key, the led will change to red flashing for about 60 seconds: during this time the unit will not accept any keys.

PROGRAMMING

Programming is carried out by the 4 buttons located on the back of the module, LEDs and acoustic signals are provided to assist with the programming. In "stand-by" the buttons are locked, these must be unlocked by entering the unlock sequence before any programming can be undertaken.

UNLOCK BUTTONS

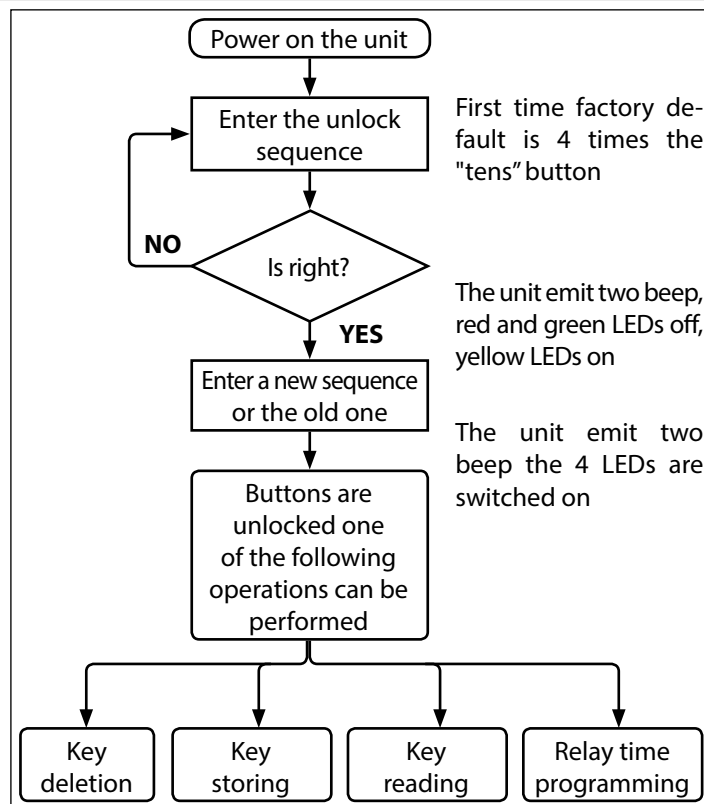
The programming buttons are locked to prevent unauthorised or accidental operation. The unlock sequence is a combination of 4 button activations: the available buttons are “tens”, “units”, “store” and “delete”, the same button can be operated up-to a max of 4 times as the unlock sequence.

UNLOCK BUTTON PROCEDURE:

- From “stand-by” (green and red LEDs on) enter the unlock sequence by pressing the relevant buttons, (factory settings when first used 4 x operation of the “tens” button).
- If the entered sequence is wrong, the unit will emit a beep and the green and red LEDs will remain on (restart from point 1). When the correct sequence is entered, the green and red LEDs are switched off and the two yellow LEDs are switched on confirming the correct sequence.
- With the two yellow LEDs switched on the unit is now waiting for a new unlock sequence or confirmation of the previous sequence. If an unlock sequence (new or old) is not entered within 15 seconds the unit will revert to “stand-by” (restart from point 1).
- When the unit emits 2 beeps and the 4 LEDs are switched on this indicates that the buttons are unlocked (“programming mode”) and the following operations may now be performed.
 - Key storing
 - Key deletion
 - Key reading
 - Set the relay time

The unit will automatically relock if no operations are detected within 20 seconds of being unlocked.

To exit programming mode before the 20 seconds timeout expires, hold the Delete button down for three seconds. The green Store LED will illuminate for 1 second and the module will beep once. The module will then have exited programming mode.

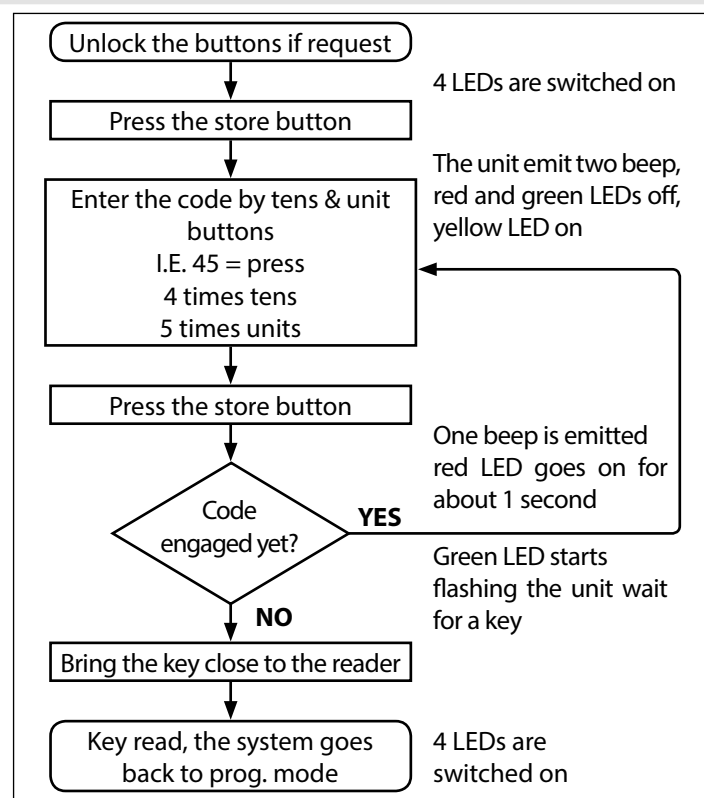


KEY STORING

All keys (tags or fobs) have a unique number these are stored within the unit (in locations 1 to 99). A stored key when read will activate the unit’s built-in relay.

KEY STORING PROCEDURE:

- Unlock the buttons as described above to enter the “programming mode” (yellow, green & red LEDs switched on).
- Press the “store” button, green LED is switched on while all other LEDs are off. The unit is waiting for a code (1 to 99).
- Enter the code (1 to 99) using the “units” and “tens” buttons. Each button operation is confirmed by a beep and the corresponding LED flashing, eg, to enter 45, press the “tens” button 4 times then the “units” button 5 times.
- Press the “store” button to confirm.
 - If the chosen code is already in use, the unit will emit a beep and the red LED will switch on for 1 second. Restart from point 3.
 - If the chosen code is available, the green LED will flash, the unit is waiting for a proximity key to store.
- Offer the new key close to the centre of the front side of the unit, when the key has been read the unit reverts to “programming mode” (4 LEDs switched on) and is now waiting for a new programming operation.

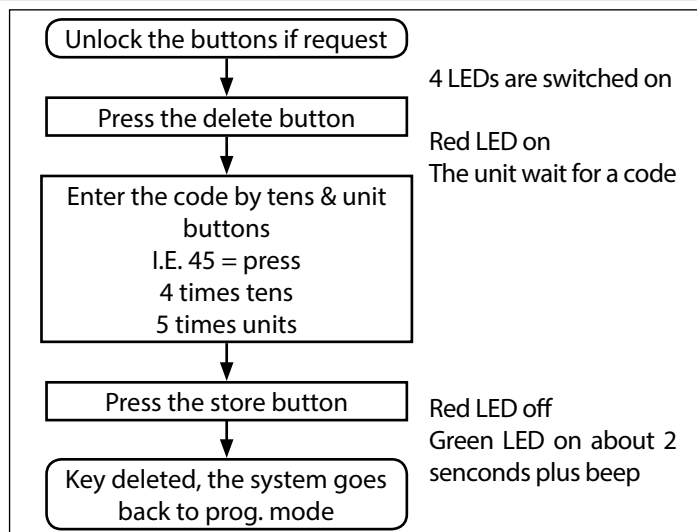


KEY DELETION

A lost, stolen or misplaced key can be deleted from the unit allowing another key to be programmed into the same deleted key position.

KEY DELETION PROCEDURE:

1. If required unlock the programming buttons as identified earlier to enter the **"programming mode"** (yellow, green & red LEDs switched on).
2. Press the **"delete"** button, the red LED is switched on, all other LEDs are off.
3. Enter the code for the key to be deleted (1 to 99) using the **"units"** and **"tens"** buttons. Each button operation is confirmed with a beep and the corresponding LED flashing, eg, to enter 45, press the **"tens"** button 4 times then the **"units"** button 5 times.
4. Press **"store"** to confirm deletion. The red LED is switched off, the green LED is switched on for about 2 seconds and the unit emits a beep before reverting into **"programming mode"** (4 LEDs switched on).

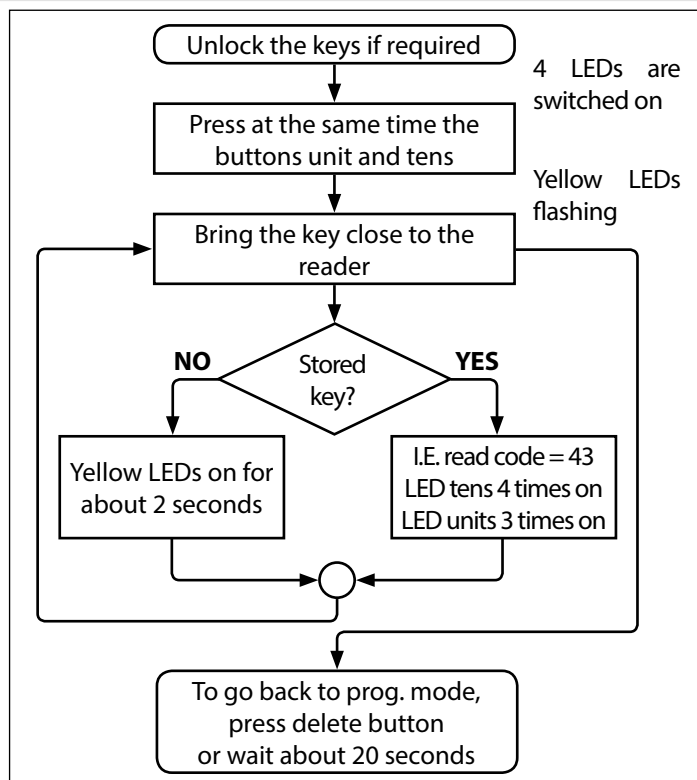


KEY READING

This allows the code of an unknown key if programmed into the unit to be identified.

KEY READING PROCEDURE:

1. If required unlock the programming buttons as identified earlier to enter the **"programming mode"** (yellow, green & red LEDs switched on).
2. Press the **"units"** and **"tens"** buttons at the same time, the red and green LEDs will be switched off while the yellow LEDs start flashing:
3. Offer the unknown key to the reader (centre of the front) to allow the key to be read:
 - a. If the key is stored, the **"tens"** LED will flash for how many tens are in the code then the **"units"** LED will flash for how many units are in the code.
 - b. If the key is not stored, the two yellow LEDs will remain switched on for about 2 seconds.
4. Read a key (stored or not) the two yellow LEDs will revert to flashing waiting for other keys to be read:
5. To exit from the reading mode and go back to **"programming mode"** (4 LEDs switched on) press the **"delete"** button or wait for 20 seconds.

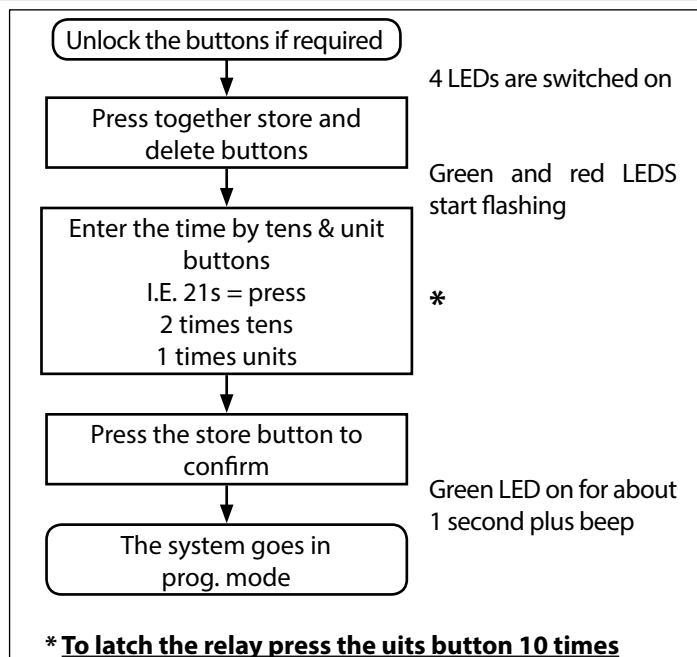


RELAY TIME PROGRAMMING

This allows the relay time to be set from 1 to 99 seconds.

RELAY TIME PROGRAMMING:

1. If required unlock the programming buttons as identified earlier to enter the **"programming mode"** (yellow, green & red LEDs switched on).
2. Press the **"store"** and **"delete"** buttons at the same time until the red and green LEDs start flashing.
3. Set the relay time (1 to 99 seconds) using the **"units"** and **"tens"** buttons, eg, to set the relay for 21 seconds, press the **"tens"** button two times and the **"units"** button once (each time a button is pressed the unit emits a beep and the associated LED is switched on).
4. Press the **"store"** button to confirm, a beep is emitted and the green LED is switched on for 1 second the unit will then revert back to **"programming mode"** (4 LEDs switched on) waiting for a new programming operation.



SETTING THE RELAY FOR LATCH OPERATION MODE

Two modes of operation are available:

- The relay will latch for all keys (1 to 99);
- The relay will latch for keys 90 to 99 (1 to 89 will operate for the normal relay time);

ALL KEYS OPERATING IN LATCH MODE (1 TO 99)

- This mode can be set during the relay time programming mode (see relevant section), enter the programming mode so that all LED's are on. Press the **"store"** and **"delete"** buttons together until the store and delete LED's begin to flash. Press the **"units"** button ten times and then press **"store"**. After this, all keys when presented will toggle the relay on and off (1 to 99) i.e. If the relay is on when a key is presented it will switch off and if the relay is off when a key is presented it will switch on.
- To restore normal relay operating mode, program the relay operation time again with a different value (1 – 99 seconds using the tens and units buttons).

ONLY KEYS FROM 90 TO 99 WILL LATCH ALL OTHERS WILL OPERATE FOR THE NORMAL RELAY TIME

- To set this mode, power down the module, hold the **"units"** button down and power up. Release the **"units"** button. The units LED will flash once to confirm. Now the relay works in latch mode for keys from 90 to 99.
- To restore normal relay operating mode, power down the unit, hold the **"tens"** button down and power up. Release the **"tens"** button. The units LED flashes once to confirm.

RESTORING FACTORY PRESET

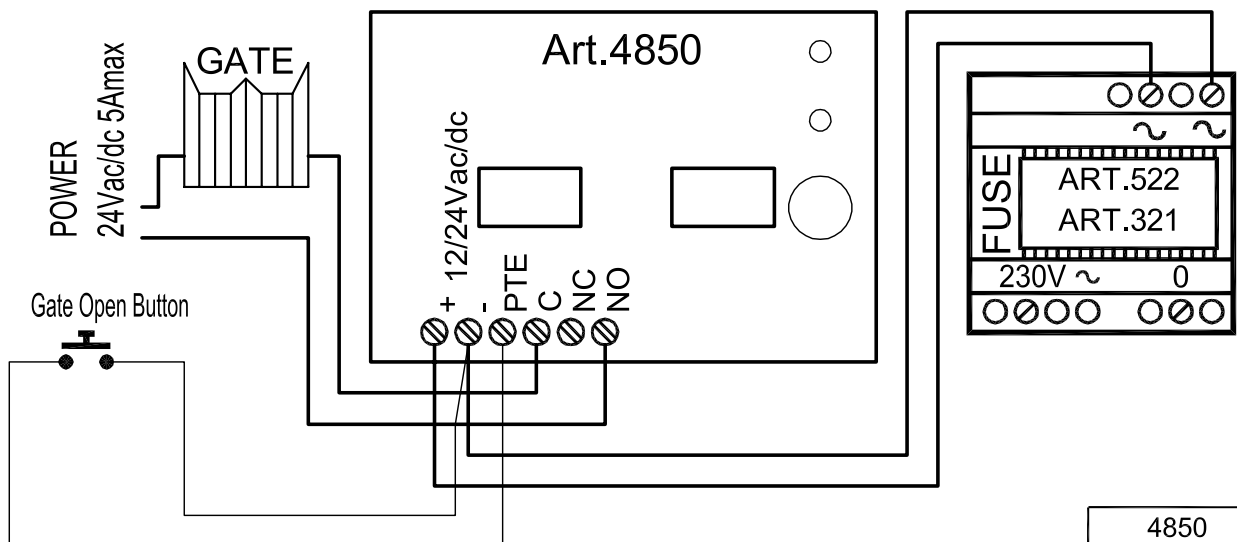
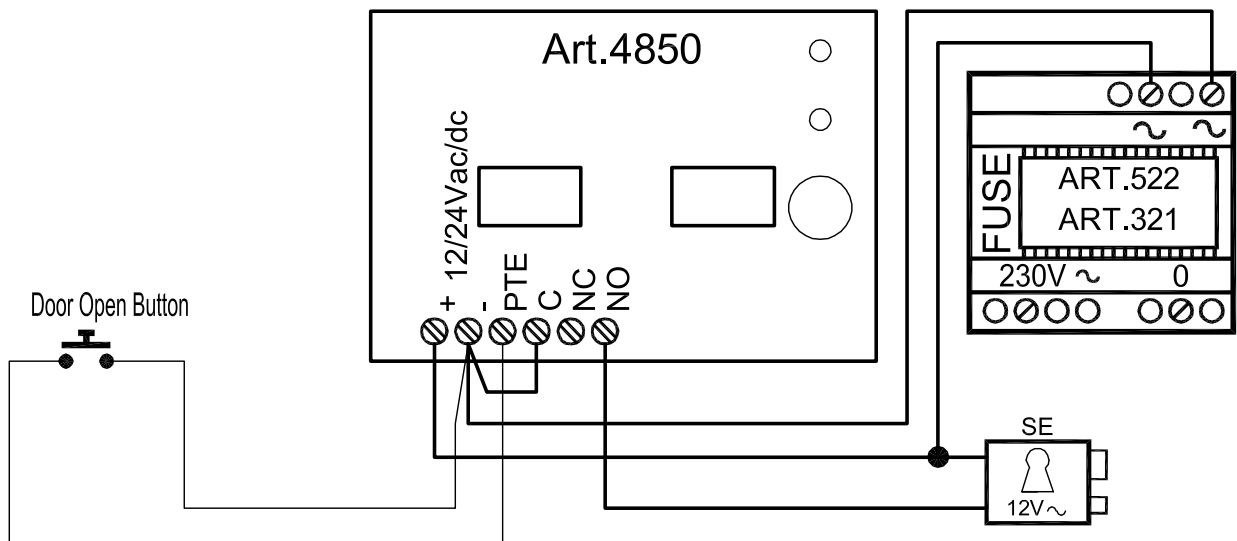
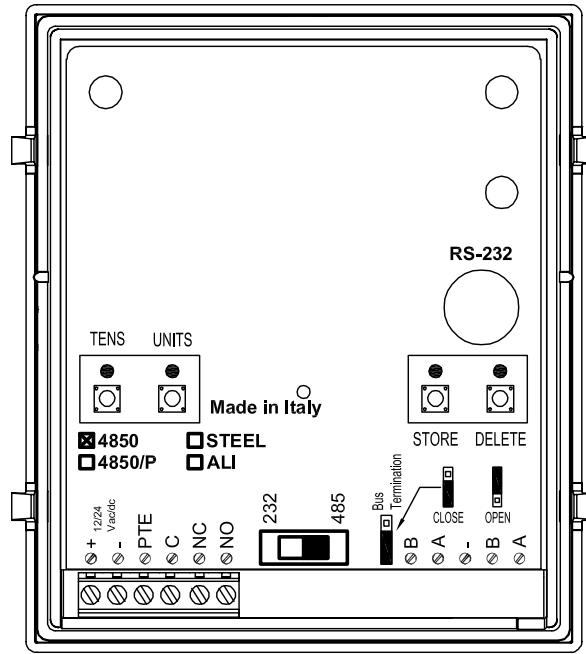
To restore factory preset, proceed as follows:

1. Disconnect mains power;
2. Make a link between PTE and GND;
3. Restore mains power;
4. Wait for 5 seconds;
5. Disconnect mains power;
6. Remove the link between PTE and GND. The unit parameters are restored to factory preset.

SIGNALS		
+	Power input 12/24Vac/dc	
-	Power input ground 12/24Vac/dc	
PTE	Active low input to control directly the door open relay	
C	Door open relay common contact	Max 24Vdc, 3mA
NC	Door open relay normally closed contact	
NO	Door open relay normally open contact	

TECHNICAL SPECIFICATION

- Managed Keys:** 99
- Working voltages:** 12/24 Vac/dc
- Key Recognizing time:** <1 second
- Power consumption:** Stand-by: 80mA
Operating: 120mA
- Working temperature:** -10°C +60°C



UNLOCK SEQUENCE	Units = "U"	Button 1	"T"		RELAY OP. MODE	Relay Operating Time _____ <input type="checkbox"/>
	Tens = "T"	Button 2	"T"			Latch Mode (90..99) <input type="checkbox"/>
	Store = "S"	Button 3	"T"			Latch Mode (1..99) <input type="checkbox"/>
	Delete = "U"	Button 4	"T"			
Factory Preset ▲						

KEY CODE	USER NAME	USER SURNAME
1		
2		
3		
4		
5		
6		
7		
8		
9		
10		
11		
12		
13		
14		
15		
16		
17		
18		
19		
20		
21		
22		
23		
24		
25		
26		
27		
28		
29		
30		
31		
32		
33		
34		
35		
36		

KEY CODE	USER NAME	USER SURNAME
37		
38		
39		
40		
41		
42		
43		
44		
45		
46		
47		
48		
49		
50		
51		
52		
53		
54		
55		
56		
57		
58		
59		
60		
61		
62		
63		
64		
65		
66		
67		
68		
69		
70		
71		
72		
73		
74		
75		
76		
77		

KEY CODE	USER NAME	USER SURNAME
78		
79		
80		
81		
82		
83		
84		
85		
86		
87		
88		
89		
90		
91		
92		
93		
94		
95		
96		
97		
98		
99		

MANUFACTURERmade in
ITALY**VIDEX ELECTRONICS S.P.A.**

Via del Lavoro, 1 - 63846 Monte Giberto (FM) Italy
 Tel (+39) 0734 631669 - Fax (+39) 0734 632475
 www.videx.it - info@videx.it

CUSTOMER SUPPORT

All Countries:
VIDEX ELECTRONICS S.P.A.
 www.videx.it - technical@videx.it
 Tel: +39 0734-631669 - Fax: +39 0734-632475

UK Customers:
VIDEX SECURITY LTD
 www.videx-security.com
 Tech Line: 0191 224 3174 - Fax: 0191 224 1559



The product is CE marked demonstrating its conformity and is for distribution within all member states of the EU with no restrictions. This product follows the provisions of the European Directives 2014/30/EU (EMC); 2014/35/EU (LVD); 2011/65/EU (RoHS): CE marking 93/68/EEC.